

Clamp Supports



- Solid Fixation
- Good-looking Application
- Easy integration
- High quality stainless steel

With this clamp solution, it is easy to integrate your capacitive device into any machine or server door. It will make sure there is a solid fixation and good-looking application for any place. It makes the device IP65 proof, due to the perfect fit.

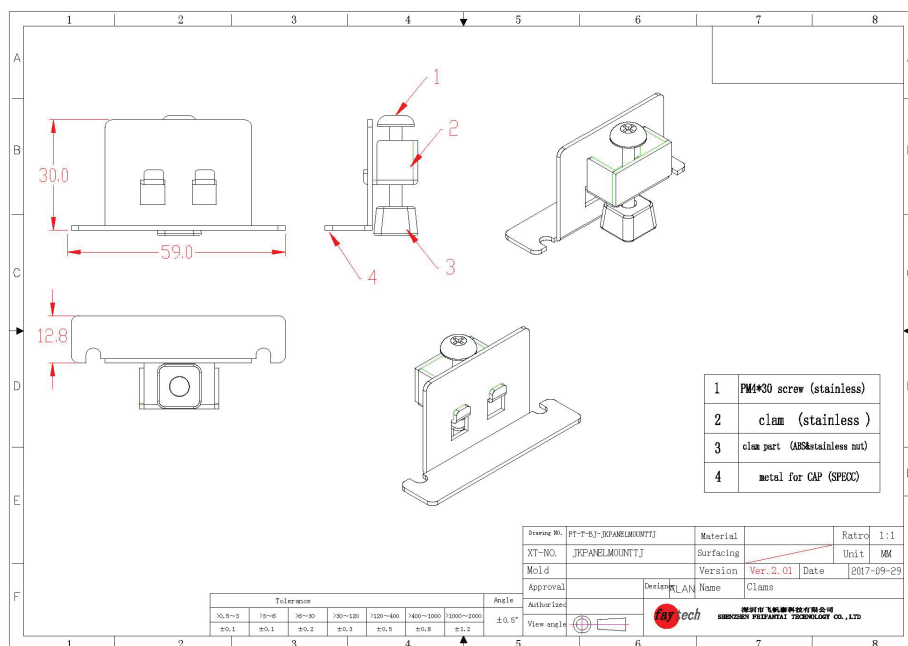
It works on nearly all the capacitive devices from 10.1" until 21.5" (not 10.1" and 13.3" Cap TM, or 10.1" Embedded).



Product name	Clamp Supports
Article code / EAN number	JKPANELMOUNTTJ

Range of Application	
10.1"	Cap TPC
13.3"	Cap TPC, Embedded
15 - 21.5"	Cap TM, Cap TPC, Embedded

Operation / Mechanical	
Length of base (mm)	59.00
Width of base (mm)	12.80
Total height (mm)	30.00
Material	PM4*30 screw (stainless)
	Clamp (stainless)
	Clamp part (ABS & stainless nut)
	Metal for CAP (SPECC)



Corporate Headquarters

faytech AG
Bischhäuser Aue 10
37213 Witzenhausen
Germany

support@faytech.com
contact@faytech.com
www.faytech.com

China: +86 755 8958 0612
Germany: +49 5542 30374 10
USA: +1 646 205 3214
India: +91 11 49707436
Japan: +070 4127 5167