

faytech AG
Corporate Headquarters

Bischhäuser Aue 10
37213 Witzenhausen
Germany
sales@faytech.de
sales.eu@faytech.com

faytech Tech Co., Ltd.
Production center / Asian Headquarters

Floor 5&6, Building F., Hongmen
Tech. Zone, Jihua Rd.,
Shenzhen, China 518129
contact@faytech.com



For technical questions & support please contact:

Worldwide support:
support@faytech.com (English, German, Chinese)

Support hotlines:
Germany: +49 5542 30374 10 (English, German)
USA: +1 646 205 3214 (English)
China: +86 755 89580612 (English, German, Chinese)
India: +91 11 49707436 (English, Hindi, Tamil)
Japan: +070 4127 5167 (English, Chinese, Japanese)

faytech

Relies on German Engineering standards and combines that with attractively priced Asian Manufacturing. In combination with reliable Local Service, faytech offers one of the most interesting packages in the touch device industry.

Distributors in Europe, North America, Australia, Africa and Asia offer faytech products, which makes faytech a reliable global brand.



Website:

www.faytech.com

Company videos:

www.youtube.com/faytechTouchDevices

Blog:

www.faytechtouchdevices.wordpress.com

© faytech 2018-2019

faytech, nice touch.

**2018
2019
CATALOGUE**

YOUR **TOUCH DEVICE** SPECIALIST

faytech AG

German Engineering
Asian Manufacturing
Local Service



For Applications

Industrial	Automation	Machine Control	Digital Signage
ATM/POS	Medical	Transportation	



faytech's quality

faytech is a German owned company under German management operating our own factory in Shenzhen China, utilizing the cost advantages of Asian manufacturing. Using German engineering standards, our R&D team designs our products and specifies all of the components in addition to assuring that all products are manufactured in the highest quality.

faytech's in-house developed and designed touch controller, which is based on EERI's chipset, supports a wide range of drivers and operating systems, delivering high reliability and serviceability. Our industry leading mainboards are produced by world-famous ODM manufacturers, and designed in collaboration with faytech.

faytech uses only new panels from the most reliable LCD panel manufacturers and 100% guarantees no pixel fault.

All faytech products are backed with a worldwide two-year warranty, with better after sale support available in English, German and Chinese.

We comply with the highest worldwide standards, e.g. RoHS, CE, FCC, CCC, UL and received ISO 9001:2008 certification.

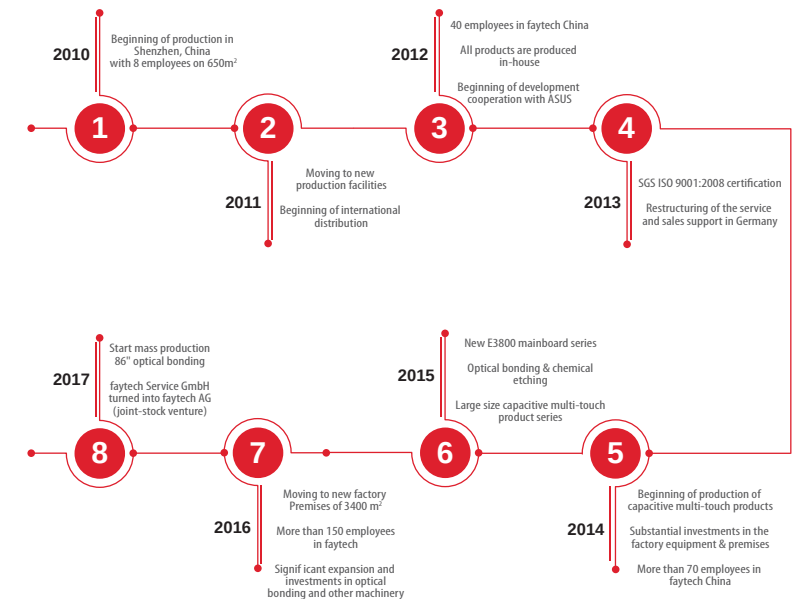


faytech's roots lay in Germany. Arne Weber, the founding manager of faytech, started to develop and market electronic devices in 2001. Later in 2006, the today called faytech AG started to import touchscreen displays in Germany. Within three years, the German corporation became the leading touchscreen supplier in Germany in this niche.

Based on the early success, Fan Yang joined faytech. After that the management team moved to Shenzhen to start its own production facility in China. By doing this the company now combines German quality and development know-how together with Chinese sourcing and manufacturing competencies. In 2009, faytech Tech. Co., Ltd. was founded and Fan has been leading the company since then as a founding manager.

In 2010, faytech began to produce touch PCs in its own factory for the first time. Today all offered touch devices are solely designed and manufactured by faytech. produced on its own ISO 9001:2008 certified production lines, following strict German quality guidelines and expectations. faytech's marketing strategy is to deliver the best price/quality ratio in the industrial and B2B touch device market.

10 YEARS OF PRODUCTION IN SHENZHEN



Resistive Touch Monitors

faytech's Resistive Touch Monitors make your working process easier and more efficient. These monitors are packed with features and connectors that make them perfect for any industrial or commercial application. Each Touch Monitor is produced using an industrial LCD panel with back lighting (20,000 – 30,000 hour lifespan), 4- or 5-wire resistive touch and anti-glare coating to enhance the user's experience and of course includes faytech's 100% guarantee of no defective pixels. All these devices are wall mountable or can be stationed anywhere with the high-quality stand.

- The 7-12" Monitors have extended current input (8-36V), VGA + HDMI ports, three video inputs, extended temperature range
- The 15-22" Monitors have VGA and DVI-D connectors, with additional S-Video and HDMI connections added to the 22" version

This product line is the perfect choice for a wide variety of applications including use in POS systems, as control panels in the industrial area, in kiosk systems, for machine control, in the office and in many other fields.



7" Touch Monitor



8" Touch Monitor



10" Touch Monitor



12.1" Touch Monitor



15" Touch Monitor



17" Touch Monitor



19" Touch Monitor



22" Touch Monitor



Capacitive Touch Monitors

faytech's Capacitive Touch Monitors have a modern sleek look with its flat edge to edge glass IP65 water- and dust proof front panels. This product line comes with capacitive 10-finger multitouch (40-finger for 84" device), glass front reaching MoS₇, the glass surface is anti-glare treated (chemical etched), a wide variety of connectors including USB-B for touch, HDMI, DVI-D, VGA and audio inputs, all lockable including the DC-IN. Each capacitive Touch Monitor has an A+ industrial LCD panel with guarantees faytech's 100% no pixel errors. The monitor between 13.3" and 21.5" come with their own desktop stand, and screw patterns on the back for VESA 100 mounts.

These devices are the perfect choice for a wide variety of applications including POS systems, control panels in industrial fields, in kiosk systems, office/residence automation, digital signage and in areas like shopping malls, classrooms, hotels and many more.



	7" Touch Monitor	13.3" Touch Monitor	21.5" Touch Monitor	32" Touch Monitor	84" Touch Monitor
Case size (cm) L x W x H	19.56 x 13.76 x 3.75	34.76 x 21.91 x 3.15	52.73 x 32.39 x 4.60	76.96 x 47.11 x 5.82	196.12 x 119.17 x 8.18
Screen diagonal (Inch/cm)	7/17.78	13.3/33.78	21.5/54.69	31.5/80.01	84.2/213.36
Display active screen size (cm)	15.38*9.00	29.37*16.52	47.70 x 26.80	69.84*39.29	196.04*104.65
Mounting	VESA 75	VESA 100	VESA 100	VESA 400*300	VESA 600 x 400
Net weight (kg)	0.60	1.5	7.30	13.50	92.00
Aspect ratio	16:9	16:9	16:9	16:9	17:10
Physical resolution	1024*600	1920*1080	1920x1080	1920*1080	3840*2160
Maximal screen resolution	1920*1080	1920*1080	1920x1200	1920x1200	3840*2160
Colors displayed	262K	16.7M	16.7M	16.7M	1.06 Billion
Brightness (cd/m ²)	500	350	250	350	350
Contrast	700:1	700:1	1000:1	3000:1	1600:1
Typical reaction time Tr/Tf (ms)	10/15	14/11	1.5/3.5	6/1	5/8
Viewing angle horizont./vertic (°)	150/145	178/178	170/160	178/178	178/178
Working power (V)	12	12	12	24	AC 100-240
Power consumption (W)	7	12	22	65	410
Operating temperature (°C)	-10 ~ +60	-10 ~ +60	-10 ~ +60	-10 ~ +60	-10 ~ +60
Touch technology	Projected capacitive 10-point multitouch	Projected capacitive 10-point multitouch	Projected capacitive 10-point multitouch	Projected capacitive 10-point multitouch	Projected capacitive 10-point multitouch
Touch connector	USB	USB	USB	USB	USB
Touch panel drivers	Windows, Linux, Mac, Android	Windows, Linux, Mac, Android	Windows, Linux, Mac, Android	Windows, Linux, Mac, Android	Windows, Linux, Mac, Android
Touch life (Contacts)	Unlimited	Unlimited	Unlimited	Unlimited	Unlimited
Surface hardness	7H	7H	7H	7H	7H

Connectors:
VGA, DVI, HDMI; Audio-Out, Audio-In

Additional features:
OSD Menu with lockable front buttons, loudspeaker, stand

*Also available in: 8", 10", 10.1", 12.1", 15", 17", 19", 43" and 55"





7" IP65 High Brightness Touch Monitor

Case size (cm) L x W x H	21.40 x 13.40 x 3.85
Screen diagonal (Inch/cm)	7/17.78
Display active screen size (cm)	15.36 x 9.00
Mounting	VESA 75
Net weight (kg)	1.10
Aspect ratio	16:9
Physical resolution	1024x600
Maximal screen resolution	1920x1080
Colors displayed	262K
Brightness (cd/m²)	1000+
Contrast	700:1
Typical reaction time Tr/Tf (ms)	10/15
Viewing angle horizont./vertic (°)	150/145
Working power (V)	8~36
Power consumption (W)	10
Operating temperature (°C)	-25 ~ +75
Touch technology	4-wire resistive
Touch connector	USB
Touch panel drivers	Windows, Linux, Mac, Android
Touch life (Contacts)	10 million touches in 1 location
Surface hardness	3H



IP65 Touch Monitors with All-In-One Cable

Suitable for outdoor or industrial applications. High brightness and extended voltage range.
Currently being used in mining trucks in Australia, in production facilities in Germany, and in medical applications throughout Europe.

	8" IP65 High Brightness Touch Monitor	10.4" IP65 High Brightness Touch Monitor	12.1" IP65 High Brightness Touch Monitor	15" IP65 High Brightness Touch Monitor
Case size (cm) L x W x H	23.20 x 17.20 x 3.95	27.62 x 20.94 x 4.15	30.60 x 24.40 x 4.25	37.50 x 28.70 x 4.55
Screen diagonal (Inch/cm)	8/20.32	10.4/26.42	12.1/30.73	15/38.10
Display active screen size (cm)	16.20 x 12.20	21.12 x 15.84	24.60 x 18.40	30.40 x 22.80
Mounting	VESA 75	VESA 75	VESA 75	VESA 100
Net weight (kg)	1.50	1.80	2.60	3.40
Aspect ratio	4:3	4:3	4:3	4:3
Physical resolution	1024x768	1024x768	1024x768	1024x768
Maximal screen resolution	1920x1080	1920x1080	1920x1080	1920x1200
Colors displayed	16.7M	262K	16.7M	16.7M
Brightness (cd/m²)	1000+	1000+	1000+	1000+
Contrast	700:1	500:1	700:1	700:1
Typical reaction time Tr/Tf (ms)	6/14	12.5/12.5	25/10	8/12
Viewing angle horizont./vertic (°)	150/150	140/120	160/160	160/160
Working power (V)	8~36	8~36	8~36	8~36
Power consumption (W)	12	18	20	24
Operating temperature (°C)	-25 ~ +75	-25 ~ +75	-25 ~ +75	-25 ~ +75
Touch technology	4-wire resistive	5-wire resistive	5-wire resistive	5-wire resistive
Touch connector	USB	USB	USB	USB
Touch panel drivers	Windows, Linux, Mac, Android	Windows, Linux, Mac, Android	Windows, Linux, Mac, Android	Windows, Linux, Mac, Android
Touch Life (Contacts)	10 million touches in 1 location	10 million touches in 1 location	10 million touches in 1 location	10 million touches in 1 location
Surface hardness	3H	3H	3H	3H



Resistive Touch PC

Case Size (L x W x H) cm			
7" Touch PC	18.60 x 12.80 x 4.05	15" Touch PC	36.80 x 28.80 x 5.78
8" Touch PC	21.60 x 18.30 x 5.66	17" Touch PC	39.70 x 32.50 x 6.05
10" Touch PC	25.90 x 20.60 x 5.35	19" Touch PC	46.80 x 31.40 x 6.25
12.1" Touch PC	30.40 x 21.40 x 5.10		

CUSTOMIZATION AVAILABLE UPON REQUEST

i5 and i7 Mainboards Available

Capacitive Open-frame Panel Mount Different Colors Available

Key features:

- 5-Wire Resistive Touch
- Fanless operation - no moving parts
- Intel® Celeron N2807 DualCore processor
- Intel® HD Graphics
- 2 GB RAM (max. 4GB); 64GB SSD
- 32bit and 64 bit support
- Pre-installed Linux Ubuntu



17" Resistive Touch PC
*stand shown is sold separately



Resistive Touch PCs

For industrial and business applications, faytech's Touch PC series provide incredible stability due to its fanless silent operation, no moving parts design and aluminum housing.

Equipped with strong Intel® Celeron™ DualCore or QuadCore CPU, Intel® HD graphics, 2G / 4G RAM and 64G SSD, the system supports various OS, e.g. Win 7/ 8/10 (32 or 64 bit) and Linux. With Intel® I5-5200u CPU, fay-003 mainboard is available for better performance.

Using 5-wire resistive touch panels (4-wire for 7") and faytech's subpixel free A+ LCD panels, it is our cost-effective yet highly reliable solution for long term operation. faytech's Touch PCs are the perfect option for moderate and challenging situations, such as industrial automation, POS system, digital signage, etc.



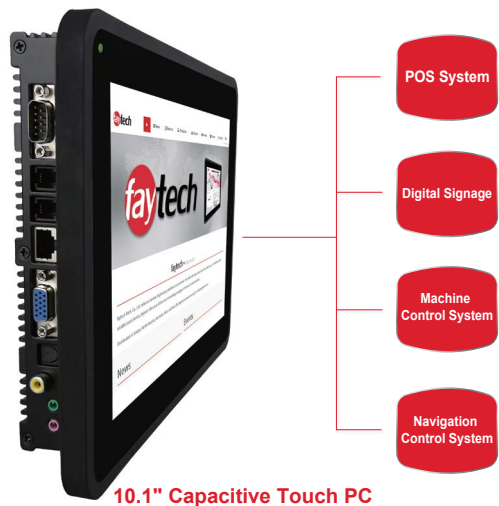
Capacitive Touch PCs

faytech's Capacitive Touch PCs with silent fanless operation, reliability and fine craftsmanship, stand out from the competition. It is the perfect choice for industrial and business application. It has flat edge to edge glass with IP65 water- and dust proof front panels. The back has a sturdy aluminum case manufactured out of a continuous casting mold with stable VESA-100 fixation bolts (VESA-400 for 32" and up). The PCs offer numerous industrial and consumer connectors such as four serial ports, eight GPIOs and USB 3.0. The heart of the Touchscreen PC is faytech's industrial fay-002 mainboard with the powerful Intel® Celeron™ J1900 QuadCore processor with up to 2.42GHz Core speed, equipped with 4GByte RAM, 64G SSD and Intel's HD Graphic chipset, supporting FullHD, DirectX 11.1 and OpenGL 4.0.

These faytech PCs are the perfect choice for a wide variety of applications including POS systems, control panels in industrial fields, in kiosk systems, office/residence automation, digital signage and in areas like shopping malls, classrooms, hotels and many more.

Key features:

- Edge-to-edge glass IP65 rated front
- 10-finger multitouch
- Intel® Celeron J1900 CPU, Intel HD Graphics
- 4GB RAM (expandable to 8GB)
- 64GByte SSD included
- 32Bit and 64Bit support, Linux and Win 7/Win 8/Win10 support
- Pre-installed Linux Ubuntu OS
- Consumer and industrial interfaces
- Integrated Wi-Fi (Intel 533AN), 2x10/100/1000 Mbps network ports
- Audio amplifier with 2x2w speakers
- VESA 100 bracket for mounting, metal stand included
- Customization available upon request



10.1" Capacitive Touch PC



IP65 Touch PCs

faytech's IP65 Sunlight readable, vandal-resistant aluminum Touch PC series has been designed for demanding industrial applications, especially outdoor or in places with dust or water. They are used in a wide range of fields, e.g. car-washing center (capacitive model), Brazilian police vehicles (vandalism-resistance), Australian outdoor POS (high brightness) and many other fields all over the world. With completely sealed housing and connectors, faytech' IP65 Touch PCs series is always your best option for reliable operation in harsh environments.



15" Capacitive IP65 Touch PC

21.5" - 43" IP65 Touch PCs and Touch Monitors are available.

- Outdoor suitable: With 1000+ nits brightness
- Connectors: All IP65 connectors completely customizable
- Touch: Resistive or capacitive
- Optional: Optical bonding, vandalism resistance
- The perfect model for outdoor usage, car washes, harsh environments, oil rigs, etc.
- 10.4" high brightness IP65 touch PC is now used in police cars in Brazil with flat buttons on the front for adjusting brightness

	10.4" IP65 High Brightness Touch PC	15" IP65 High Brightness Touch PC	15" IP65 Cap High Brightness Touch PC
Touch technology	5-wire resistive	5-wire resistive	Projected capacitive 10-point multitouch
Aspect ratio	4:3	4:3	4:3
Brightness (cd/m²)	1000+	1000+	1000+
Contrast	500:1	700:1	700:1
Visual angle horizont./ vert (°)	140/120	160/160	160/160
Physical resolution	1024x768	1024x768	1024x768
Touch connector	USB	USB	USB
Touch panel drivers	Win7/8/10; Linux; 32Bit / 64Bit	Win7/8/10; Linux; 32Bit / 64Bit	Win7/8/10; Linux; 32Bit / 64Bit
Touch life (Contacts)	10 million touch in 1 location	10 million touch in 1 location	Unlimited
Backlight / Backlight Lifetime (hours)	LED / 40,000	LED / 40,000	LED / 40,000
Surface hardness	3H	3H	7H
Working Power (V)	8~36	8~36	8~36
Mounting	VESA 100	VESA 100	VESA 100

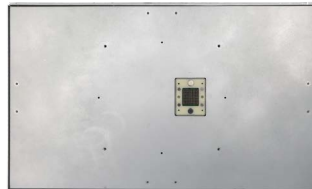


Docking Station Touch PC

This revolutionary Touch PC series is the perfect solution for any industrial application. With the docking station connector is the back-case PC able to detach from the LCD Panel, which is held in place by strong magnets, and the perfectly fitting 100-pin connection. With the strong fitting metal frame and aluminum case, and edge-to-edge cover glass, is the device neat-looking and modern.

Every model is built for reliability and extended service (at least 30,000 hours). The unit has an industrial HD LCD panel with energy-efficient LED technology, A+ quality, wide viewing angle and multi touch panel, which in combination creates a perfect interactive solution for machine control or any other related application.

This small industrial PC is powered by the brand-new fay-003 industrial mainboard with Intel® Atom™ processor Apollo Lake N3350 and Intel® HD Graphics chipset. It has pre-installed Linux Ubuntu, integrated Wi-Fi, USB ports, serial connectors, as well as several audio, video and many more connector ports.



N3350



21.5" Docking Station Capacitive Touch Moitor

Key features:

- Detachable industrial PC from LCD Panel
- Reinforced front glass, anti-glare surface treatment (chemical etched)
- 10-Finger-Multi Touch Capacitive Touch Panel
- 2 years guarantee

Key features:

- Intel® Atom™ processor Apollo Lake N3350
- 4GB RAM (expandable to 8GB), Serial ATA 6Gb/s
- Extensive industrial and consumer interfaces
- Supports Win 10, Linux (64Bit)
- 100-pin docking connection
- VESA 100 Mounting
- Integrated W-LAN
- 2 years guarantee



Open Frame Touch monitors

faytech's Open Frame Capacitive Touch Monitors are the perfect choice for industrial and business applications. The capacitive 10-finger multitouch panel brings an easy using experience for a wide range of applications. Each model in this series is built for reliable and extended service by using an A+ quality HD LCD panel with energy efficient LED technology. It is equipped with a wide range of standard connectors, such as HDMI, DVI, VGA, USB-Touch, serial (remote control) and DC-In.

The touch panel is optically bonded to the LCD panel, which will improve the stability, reduce the reflection, increase the viewing angle, and enhance the perceived brightness. It also provides resistance to dust particles and shows a better image in general. This open frame version is a light weight model without any back case, which makes it perfect for integrating into your own system or mount at different locations. On top of that, the price will be more economic, because less parts are needed. It is the perfect interactive solution for digital signage, classrooms, meeting rooms, industrial automation, shopping malls, hotels and many other areas.



Key features:

- Full HD Industrial LCD panel with backlight LED, A+ quality
- 10-Finger Multi Touch Capacitive Touch Panel
- Optically bonded Touch Panel to LCD Panel
- 2 years guarantee
- Integrated Light Sensor (optional)
- 1000+ cd/m² brightness (optional)

32" Open Frame Capacitive Touch Monitor



Embedded Touch PCs

There are currently two versions for the V40 and A20 mainboards: The standard version with W-LAN and the full version with additional Bluetooth 4.0 (2.0 for A20), GPS, POE Plug-in and OTG port. These are faytech's most cost effective yet powerful Quadcore and Dualcore solutions for Linux or Android based platforms.

Powered by the powerful Embedded V40 Mainboard or the more cost efficient yet powerful Embedded A20 Mainboard, faytech's Embedded Touch PCs are the best solutions to industrial automation, device control and digital signage. A powerful Allwinner® V40 QuadCore or A20 DualCore CPU, Mali400MP2 graphics chipset, various connectors, e.g. USB, serial, network, TTL/UART, Mini-PCle, HDMI, VGA, GPIO, LVDS and extended DC-In, all that makes the Embedded series perfect choice for reliable solutions.

The Embedded PCs are equipped with 1G DDR3 RAM, 8G flash memory and includes a SATA connector as well as SD card slot for further storage expansion. As for network connection, the device is already integrated with Wifi, over Mini PCIe the device can be upgraded to 3G+GPS using the existing SIM card slot. The touch features capacitive 10-finger multitouch panels, Anti-glare chemical etched treatment and optionally bonded to the LED backlighting panels, backed by faytech's warranty for pixel accuracy (A + quality).

The design of the Embedded Touch PCs follows the application: flat easy to integrate IP65 front and stable rear housing with VESA100 mounting for fixing / integration.

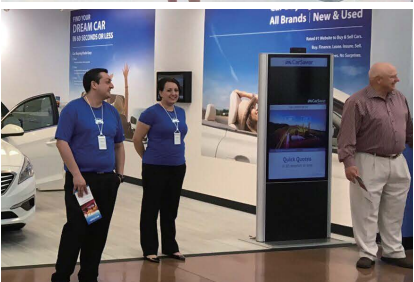
faytech's new Embedded Touch PC Series is our most cost-effective solution for intelligent machine control, and like all faytech's reliable touch devices built for precision and durability.



13.3" Embedded Touch PC

Key features:

- Allwinner® A40 Cortex™ A7 QuadCore 1GHz Processor
- 1 GB DDR3 RAM & 8 GB EMMC FLASH
- Supports Android up to version 6.X
- Full HD Resolution – 1920 × 1080
- Optional Bluetooth & GPS via Mini PCIe 3G and 4G support
- 10-Finger-Multi Touch Capacitive Touch Panel
- Patented IP65 front with silicon seal
- VESA 100 Mounting
- 2 year guarantee

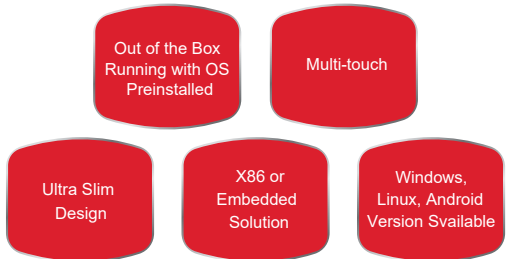


Touch PC Kiosks

Available in 21.5", 32", 42" and 55" display sizes faytech's Large Format Multi-Touch PC Kiosks are manufactured featuring full HD industrial 24/7 LCD panels for constant use with energy-saving LED backlight technology. All models come with 10 finger multitouch capacitive Touch Panels and have a slim, extraordinary stylish appearance. Each kiosk has an extra wide viewing angle and is equipped with faytech's industrial fay-002 mainboard series with its powerful but energy efficient QuadCore Celeron processor. faytech's industrial grade 64GByte SSD with preinstalled Linux Operation System (for Windows 7 to 10 drivers are available), W-Lan and many PC ports behind a lockable cover provides a complete and secure solution which can be installed and used immediately.

faytech's Touch PC Kiosks are the perfect choice for conference rooms, digital signage, classrooms, traders, transit stations, way-finding, media presentations, trade shows, and many other applications.

This series offers a wide range of customizable features, e.g. more powerful fay003 mainboard, webcam, printer, RFID, NFC, flyer-holder, different colors etc.



Project Customization

We can custom design and produce any touch device for your project. We are ready to produce large and small touch monitors, touch PCs, embedded systems and HDK's according to your required specifications. Whether it has Resistive or Capacitive touch technology, we make sure to modify the device to your needs. We do this by utilizing our broad manufacturing capabilities, experienced engineers and extensive portfolio of completed projects. Besides this, extra features can always be added upon request, such as vandalism-resistant casing, added smart card readers, printers, GPS, UMTS, cameras, and other special additions.



55" Double-side Touch Kiosk

One of the most amazing projects faytech developed in 2016 – the 55" Double side Touch Kiosk specifically designed and manufactured for outdoor application.

Reaching IP65 protection standards, which makes the device resistant to rain and dust, which are common threats for outdoor applications.

In terms of visibility, High Brightness and Optical Bonding are adopted to make sure the display presents best performance in the direct sunlight.

The 55" Double-side Touch Kiosk is consist of two single-side Touch Kiosks. Both single-sided Touch Kiosks can be mounted and used seperately. If needed, they can be easily assembled back-to-back to form a Double-side Touch Kiosk.

Other than the webcam, there are various peripherals can be integrated based on purpose, e.g. printer, scanner, RFID card reader, GPS, and etc.

Key features:

- IP65 protection
- Optical bonding
- High brightness
- Webcam integrated
- Fay002 or embedded V40 mainboard available
- Various sizes available
- Various peripherals available

Public Authorities Project

Details of the project include:

- 8" TM with printer, webcam, scanner, special function button and telephone installed in the front of the car IPC in the trunk of the car, connected by All-In-One cable
- 3-year guarantee
- 20 hrs usage daily
- Harsh environment (Bumpy roads with lots of vibration, high temperature, high brightness)
- All-In-One-Integration design, high quality finish



Developed exclusively for Public Authorities Project

8" IP65 Touch PC

Based on faytech standard 8" Touchscreen Monitor model:

- Integrate small scanner
- Integrate small thermal printer
- Integrate webcam
- Install telephone via Mic-In / Ear-Out as R11-connection
- Option via USB: small keyboard / mouse, vandalism secure
- Enhanced brightness min. 400Nits
- Aluminum case (CNC cut) with On / Off button plus three special PC-function keys for the 8" TM
- On / Off button for shutting-down the IPC
- All-In-One cable, connected to IPC

Industrial PC

Based on faytech standard industrial PC model:

- Via network connected to balanced 3G model
- Enhanced DC-IN with screwable power-plug
- All-In-One cable supporting 8" TM with power and all necessary signals

Capacitive
Touch

Flat IP65
Front

Why Optical Bonding?

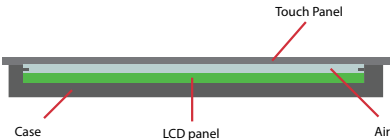
Better Display Quality.

- Less refraction – Comparing to air bonding, optical bonding reduces refraction up to 65%
- Enhancement in perceived LCD brightness – up to 10%
- Resistant to condensation and dust particles – no air gap between touch panel and LCD display
- Improve ruggedness of the device by creating a solid connection between touch panel and LCD display

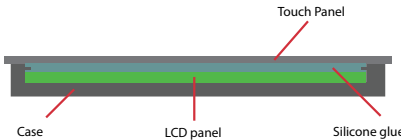
Why Silicone Glue?

Better Performance comparing to acrylic.

- Better curing – comparing to acrylic, silicone glue cures more evenly
- Less contraction – during curing procedure, acrylic causes 4% contraction, whereas silicone glue only causes < 1% contraction. This results in less internal stress for the device
- Better control over hardness – silicone glue allows wider range of surface hardness in order to comply with customer requests
- No yellowing – acrylic yellows over time, but silicone glue hardly yellows



Air Bonding



Optical Bonding

Why faytech?

The only service provider in large size optical bonding.

The difficulty of optical bonding on large sizes significantly increases compared to small sizes. Whereas many optical bonding service providers abandon this niche, we at faytech intent to master this area. faytech overcame several technical difficulties with the collaboration of German and Chinese engineers. With its perfect performance and stable quality, by the year of 2018, faytech will become the largest service provider for large size optical bonding.

Apart from faytech's advantages in the technicality, we make sure to provide attractive prices and products of excellent performance. With these two factors at faytech, we make sure to be the best option for projects that require optically bonded touchscreens, either large or small.



84" Capacitive Touch Monitor (Optically-Bonded)

Notes

Notes